

The Heritage of the Deutsche Reichsbahn and its Presentation in the Deutsche Bahn Museum in Nuremberg



Deutsche Bahn AG

Dr. Rainer Mertens

DB Museum

Bratislava, 2009-09-26

DB Museum – Memory of the German Railway



Location: Nuremberg

Founded in 1899 – the oldest railway museum in the world

Exhibition area:

6,000 m²

Open air area:

15,000 m²

Annual Visitors :

140,000 -150,000 m²

Main Collections :

Railway vehicles

Documents and literature

Photographs et graphics



Mission Statement

- n** Keeping and collecting the heritage of the German railways.
- n** Manifold and holistic representation of the company history „under one roof“.
- n** Communication of actual topics: „Shop window“ of the company.
- n** Supporting the creation of corporate identity for the DB employees.



The Collections

Outstanding Parts



Original Vehicles

161 objects

1845-1999

One of the most important collections worldwide



Model Trains 1:10

180 objects

1882-1997

Unique collection worldwide



Uniforms

470 Uniforms

1850-present

Largest collections of civil uniforms in Germany



Poster Collection DB / DR

2,100 objects

1949-1993:

Almost complete collection of DB posters, large stock of DR propaganda posters



Bötttinger Collection

13, 000 Pcs.

1800-1920

Historical prints, drawings, photographs



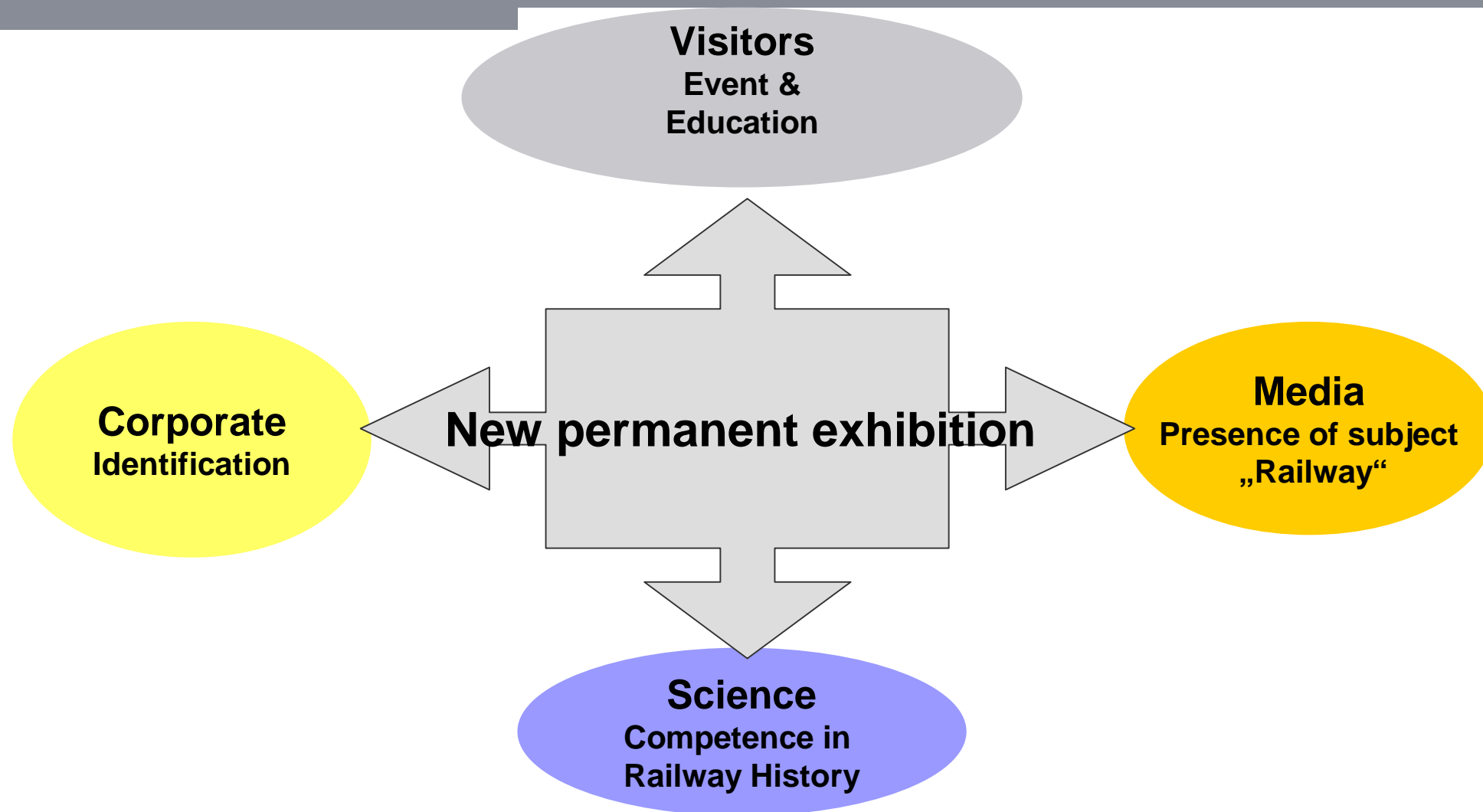
Photographs

1,000,000 Copies

1860 - present

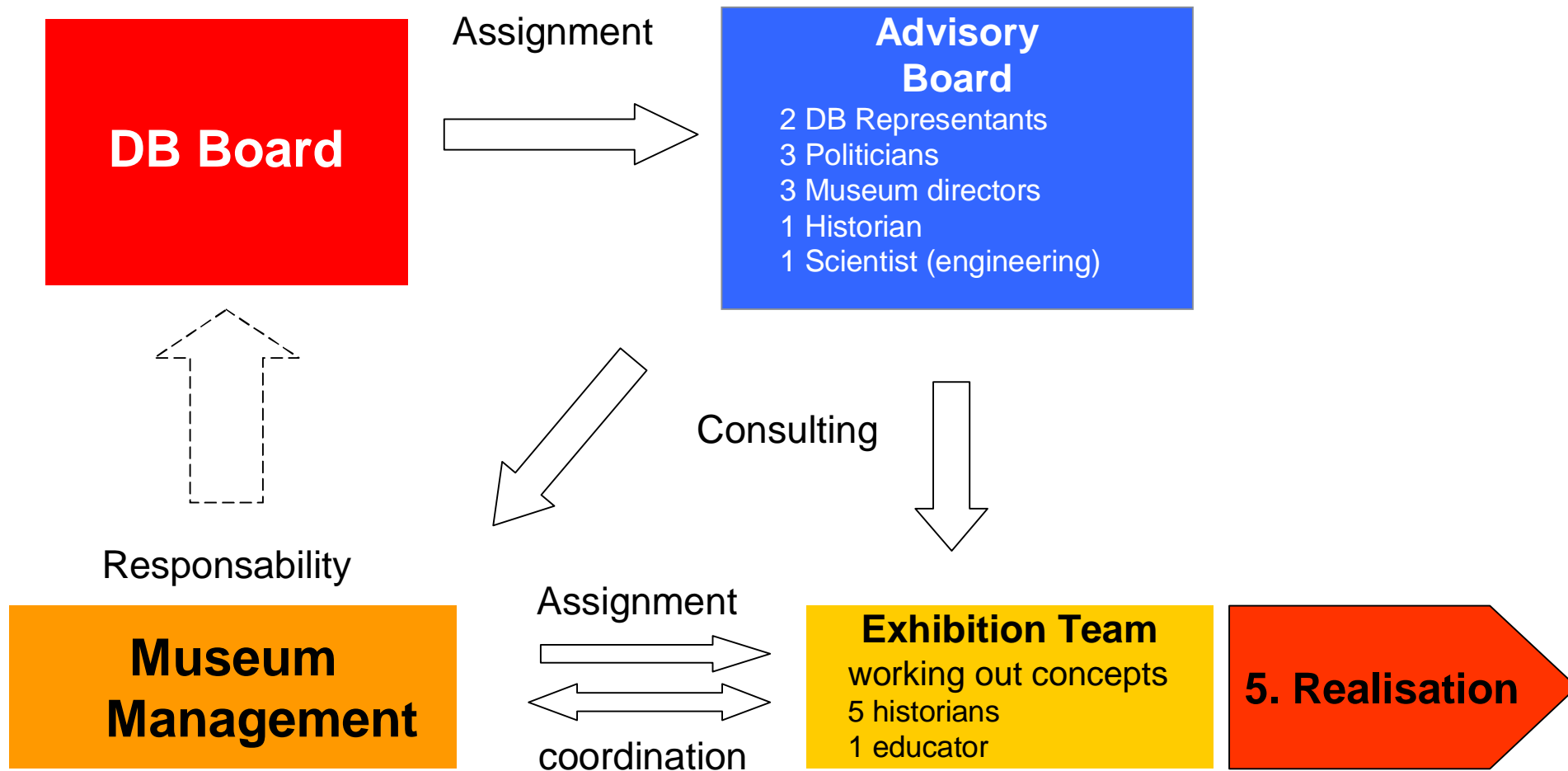
One of the largest photo collections of the world.

Nucleus of the new DB Museum: Permanent Exhibition



New Permanent Exhibition

Structures of assignment



Sources, Relics and Database

Principal collections of the History of GDR-Reichsbahn



Locomotives

Replica of the „Saxonia“

Locomotive Stock in Halle an der Saale

Sources, Relics and Database

Principal collections of the History of GDR-Reichsbahn



Photographs and films

Sources, Relics and Database

Principal collections of the History of GDR-Reichsbahn



Propaganda Posters

Sources, Relics and Database

Principal collections of the History of GDR-Reichsbahn



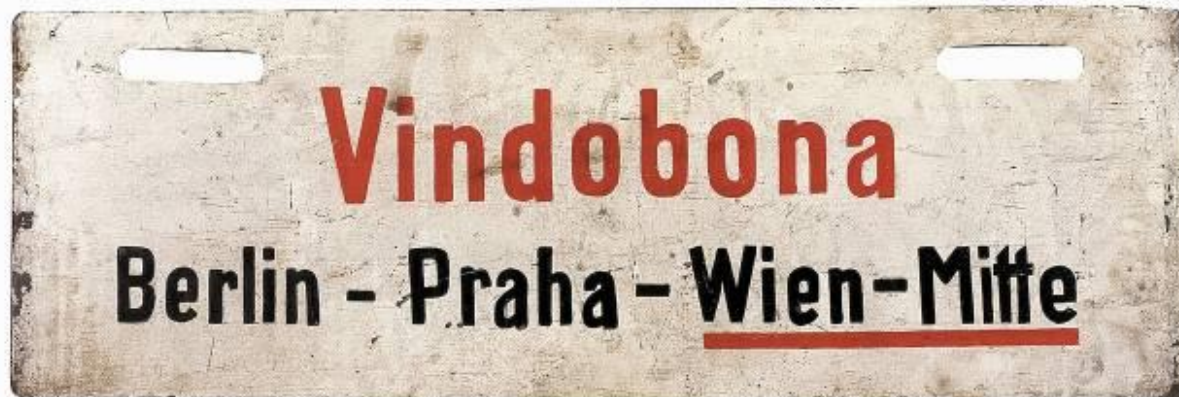
Geiger-Counter for Uranium Transport



„Dispatcher-Slipper“ (intercom unit)



Emblem of the Government Train



Relics of Service

Walking on a knife's edge

Keeping a neutral position without being apologetic

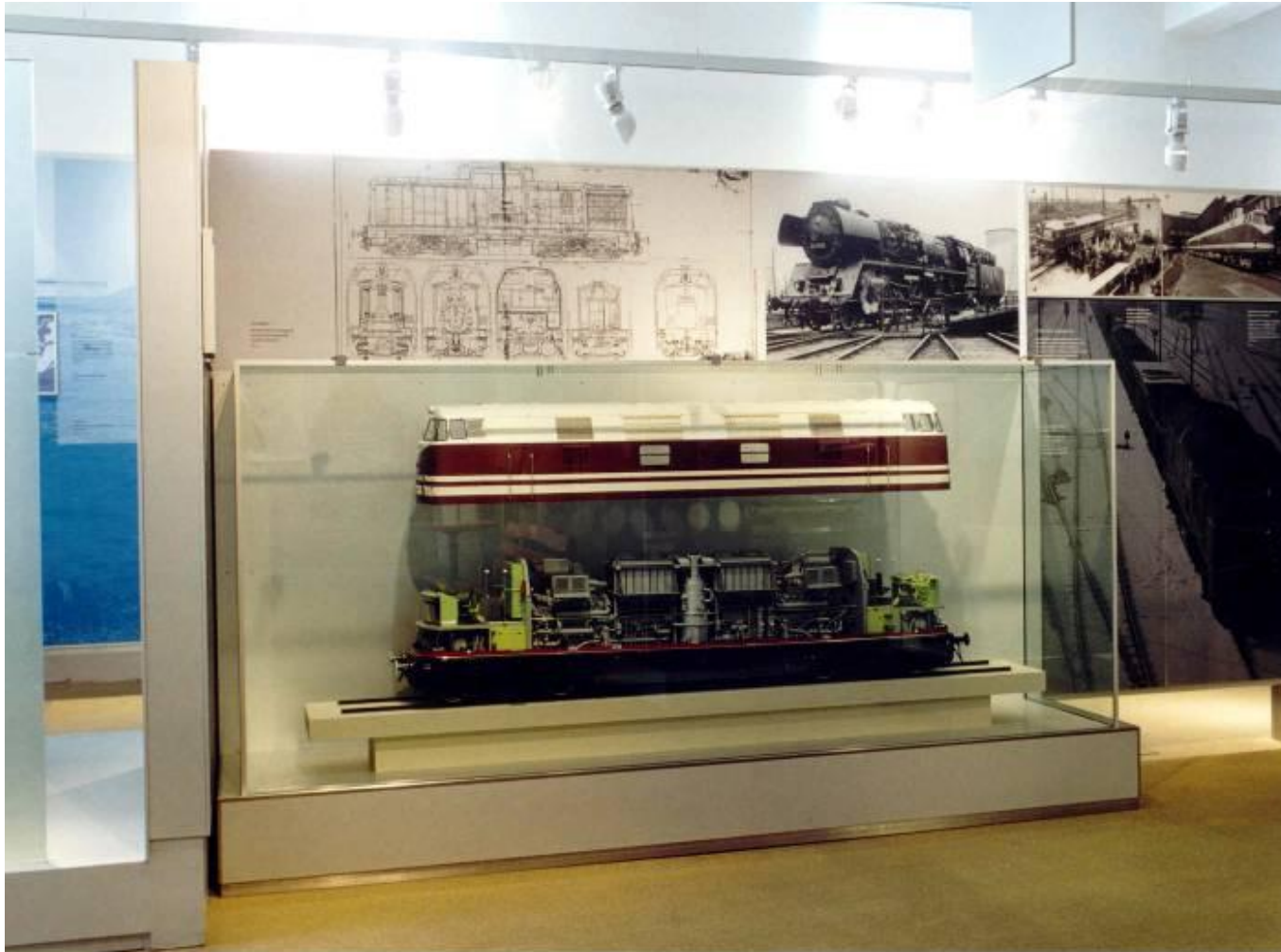


**Problems and achievements in the East:
Border fence and modern electric locomotive**



**Problems and achievements in the West:
Mass motorisation and Fifties' Railcar**

On separate Tracks „Diesel power“



Model of a Diesel
Locomotive

Loan of the
Verkehrsmuseum
Dresden

On Separate Tracks

Starting Difficulties



View into the Reichsbahn-Department of the exhibition unit.

An original boundary stone and two uniforms mark the border between the Reichsbahn-East and the Bundesbahn-West

On Separate Tracks „Propaganda“



The former „Traditionskabinett“ (= tradition room) of the Raw „Erwin Kramer“ at Potsdam

On Separate Tracks

„Double Decker“ and „Avoiding Solidarnosc“

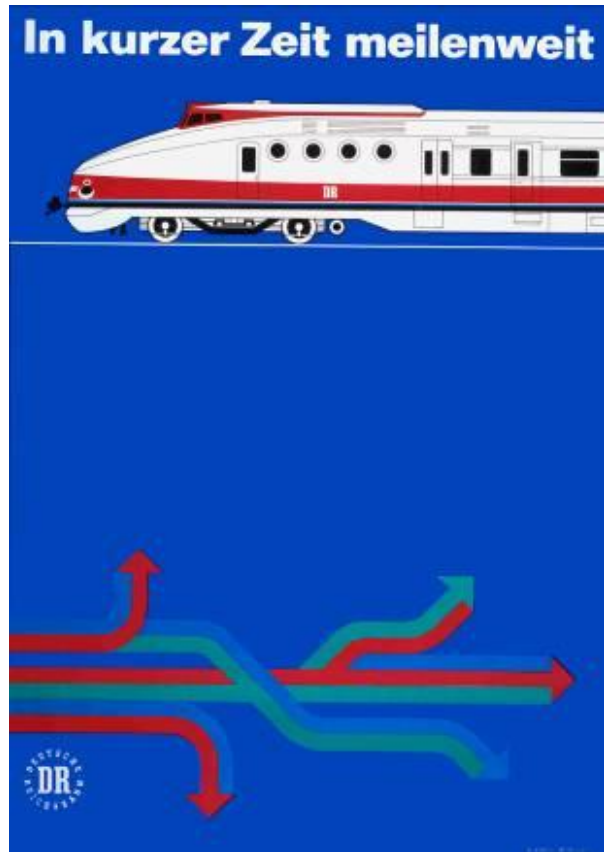


Model of a double-decker car



Model of the Mukran Ferry harbour

Special exhibition: „Go easy Go Bahn“



Advertising posters of Reichsbahn and Mitropa

Branch Museum in Halle an der Saale

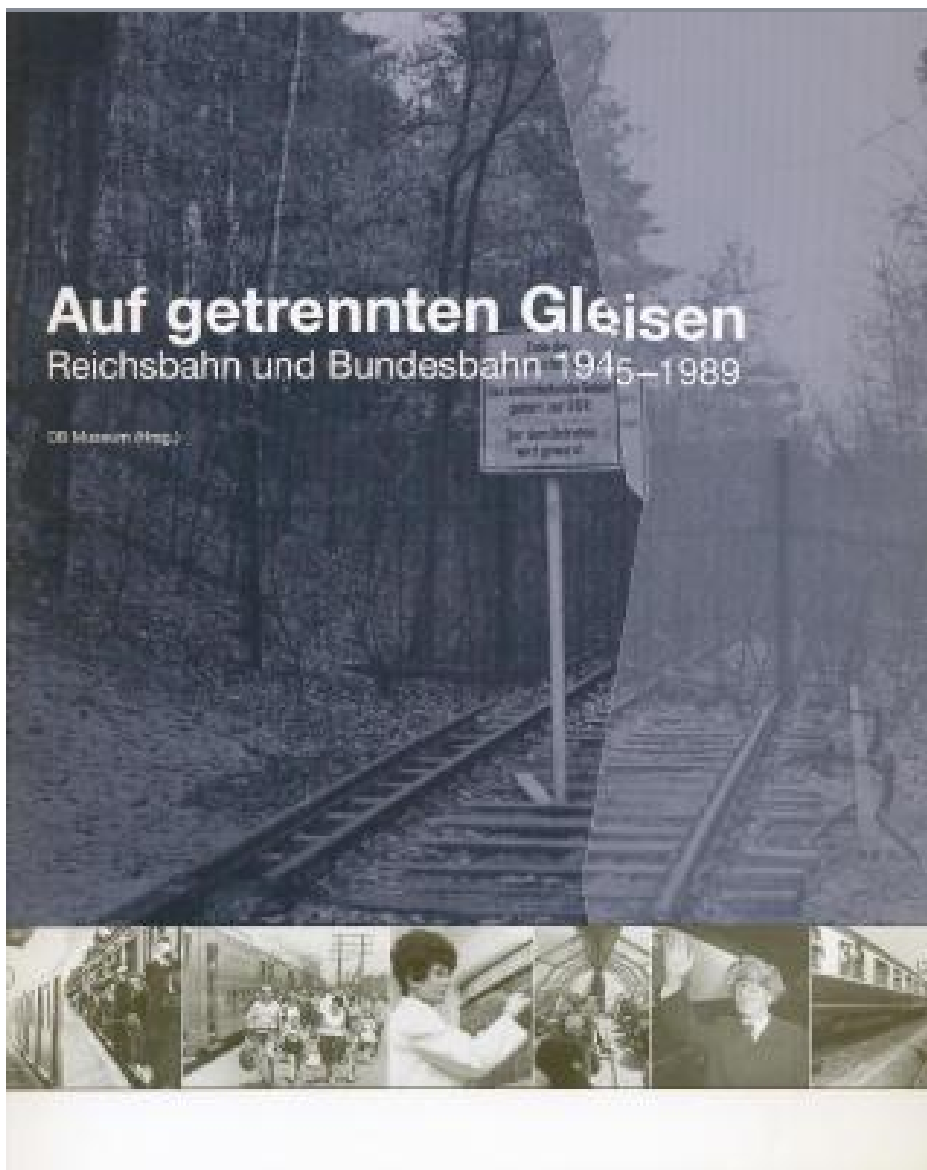


The new permanent exhibition, opened in 2008

The Halle Steam Locomotives at night



Panoramic view of the locomotive shed in Halle with all historical locomotives



Vel'mi pekne d'akujem!

Title of the exhibition catalogue

(available at the conference desk)